


**THE ELECTRICAL ADVERTISER**

JUNE 2026

[www.ElectricalAdvertiser.com](http://www.ElectricalAdvertiser.com)  
800-328-0328 • [info@ElectricalAdvertiser.com](mailto:info@ElectricalAdvertiser.com)



**JCL ENERGY**  
Padmounts, Substations, Dry's and more!  
5 MVA / 34.5 kV and below    60 MVA / 138 kV and below    5 MVA / 34.5 kV and below  
Ready-to-Ship    Units In-Stock    No Hassles  
**FAST YES EASY**  
Sales@JCL.Energy or 866.983.1300

**Electrical.com**

Mention Promo Code EA2026 and **RECEIVE 10% OFF!**

# YES... WE HAVE THAT!

One of the Nation's Largest Inventories of  
**NEW • Inspected & Tested • Obsolete!**



**DENVER BREAKER & SUPPLY**

• Circuit Breakers • Panel Mount Switches • Motor Controls • Bus Duct Plugs • Transformers • Starters • And More!

**WE SPECIALIZE IN THE TOP BRANDS & CARRY THE HARD-TO-FIND ITEMS**

Providing Same Day, Next Day Air Shipments for Emergency Needs!

**WE ALSO BUY YOUR USED EQUIPMENT...**

**855-4UR-BRKR**  
**WWW.DENVERBREAKER.COM**



All Breakers are Insured and Guaranteed – All Material is Fully Load Tested.

# WE HAVE WHAT YOU'RE LOOKING FOR

**NEW AND RECONDITIONED INSULATED CASE BREAKERS IN-STOCK!**



**All Makes!**  
**All Models!**

**TECHNOLOGY UPDATES  
AND MECHANICAL  
UPGRADES AVAILABLE**

- Trip Units with Arc Flash Reduction
- Metering Packages
- Maintenance Mode Switching
- Shunt Trips
- UVR's
- Auxiliary Switches
- Bell Alarms
- Lock Out Tag Out Provisions

PRODUCT. PEOPLE. SERVICE.  
**WE ARE YOUR SOLUTION®**

**1.800.476.1486**

[www.southlandelectrical.com](http://www.southlandelectrical.com)





# EAST COAST BREAKER SUPPLY

WE BUY AND SELL ALL ELECTRICAL SUPPLIES

ANYTHING ELECTRIC



## **WE BUY AND SELL**

**We Specialize In NEW, USED & Obsolete Equipment**  
**Circuit Breakers • Motor Controls • Bus Duct & Bus Plugs**  
**Transformers • Panel Boards • Switchgear • Much More**

**SAME DAY SHIPPING AVAILABLE**

**Specializing in Electrical Clean Outs  
& Demolition Recovery**

**800-376-5657**

**[www.EastCoastBreaker.com](http://www.EastCoastBreaker.com)**

**[buysell@eastcoastbreakersupply.com](mailto:buysell@eastcoastbreakersupply.com)**



Supplying the Electrical Industry...  
*For over 30 years.*

**7217 STUEBNER AIRLINE RD  
HOUSTON, TX 77091**



**7:30 AM - 4:30 PM  
MONDAY-FRIDAY  
AFTER HOURS CALLOUT = \$150.00**

**WE OFFER NEW & RECONDITIONED EQUIPMENT  
NOW OFFERING INSURED REMOVAL OF  
ELECTRICAL EQUIPMENT SERVICES NATIONWIDE**

**MATERIAL WE SELL & BUY**

**MOLDED CASE CIRCUIT BREAKERS  
STARTERS & COMBO STARTERS  
MOTOR CONTROL CENTERS  
PANEL BOARD SWITCHES  
STAND ALONE GEAR  
MLO & MCB PANELS  
TRANSFORMERS  
MCC BUCKETS  
DISCONNECTS  
FUSES**



**SALES TEAM**  
sales@mnjelectrical.com  
(713) 699-5055

**ACCOUNTING**  
accounting@mnjelectrical.com  
(713) 699-5055

**PURCHASER &  
EQUIPMENT REMOVAL**  
jeremy@mnjelectrical.com  
(281) 235-6480

**www.mnjelectrical.com**

# **CONTRACTORS CHOICE INC.**

## Corporate:

2070 Schappelle Ln.  
Cincinnati, OH 45240  
Phone: (513)851-9070

## Branches

- Cincinnati, OH | (513) 851-9070
- Columbus, OH | (614) 539-0131

**New • Reconditioned • Rental • We Buy Used Equipment**

### Wire Pulling



### Pipe Bending



### Pipe Threading



### Rigging



### Crimping and Holemaking



### Material Handling



**We Ship  
Nationwide**

**New - Reconditioned - Rental**  
**1 (800) 670-8665**  
[www.contractorschoiceinc.com](http://www.contractorschoiceinc.com)

**Contractors Choice  
Guaranteed  
Reconditioned Equipment  
Warranty**



UPPER MIDWEST  
**ELECTRICAL  
EXPO**  
2027

**APRIL 7-8**  
**2027**

*Minneapolis Convention Center -  
Hall D*

Join us for the largest  
gathering of electrical  
professionals, products, and  
services in North America!

- ✓ 300 booths, 7,500+ attendees
- ✓ Networking with industry professionals
- ✓ Hands-on demos

**FOLLOW US!**

 [umee.2027](#)

 [www.ncel.org](http://www.ncel.org)





# Utah Breakers & Supply

**Utah's Largest Supplier of Circuit Breakers**

**We Buy & Sell...**

**New, Used And Surplus Electrical Equipment**

**If We Don't Have It We Will Find It • WE KNOW BREAKERS!**

**Circuit Breakers**



**Bus Plugs**



**Hardware Kits**



**SAME DAY  
SHIPPING  
AVAILABLE**

**We Are Equipped  
With State Of  
The Art Testing  
Equipment**

**Transformers**



**Safety Switches**



**Starters**



**All of our products are load tested and come with a ONE YEAR warranty.**

**REPAIR SERVICES ARE AVAILABLE**

**Utah's Largest Supplier of Circuit Breakers**

**Proudly Serving the Electrical Industry since 2003!**

## Utah Breakers & Supply

**Toll Free: (800) 805-6557 • Local: (801) 908-6557**

**3056 S 1030 W, Salt Lake City, UT 84119**

**www.utahbreakers.com • brent@utahbreakers.com • tyson@utahbreakers.com**

# INDEX

Bulletin Board .....30

Directory .....15

Electric Avenue Directory .....34-35

Electrical Products .....1-14, 16-23, 25, 27, 30, 36

Generators .....14

PowerSell .....26

QUICKLINKS .....24

Transformers–New/Remanufactured/Used .....28-29, 31

Vehicles–New/Used .....21, 32

# CIRCULATION

The Electrical Advertiser has a nationwide mailing list of over 80,000 names. 25,000 publications are mailed on a monthly basis. Additional copies are distributed at many industry trade shows we attend as an exhibitor and can also be seen on our website or thru our ipad/iphone app. Our publication is a buying source for electrical contractors, distributors, utilities and plant facility personnel. Our list has been established over the last 41 years through personal contacts, trade show representation, online requests and direct marketing efforts by our staff.

## The Electrical Advertiser

1010 Dale Street North, St Paul, MN 55117

800-328-0328 • Fax 888-566-7345

www.ElectricalAdvertiser.com

info@ElectricalAdvertiser.com

## MAIL LIST UPDATE

We are constantly updating our mail list in an effort to make it the best possible! If you no longer read or use *The Electrical Advertiser*, please call us at 800-328-0328 and we'll remove your name. If more convenient, make a copy of the mailing label and fax it to our toll free fax number at 888-566-7345. Our mail list is extensive at over 80,000, and it is our intent to put the publication into hands that will use it!

## The Growing Transformer Shortage in the US

The United States is facing an increasingly serious shortage of electrical transformers, a problem that threatens power reliability, renewable energy expansion, electric vehicle infrastructure, and the rapid growth of artificial intelligence data centers. Once considered a niche industrial concern, transformers have become one of the most critical bottlenecks in the American energy economy.

Transformers are essential components of the electrical grid. They raise voltage for long-distance transmission and lower it again for homes, businesses, factories, and charging stations. Without transformers, electricity generated at power plants cannot efficiently move through the grid. As demand for electricity rises sharply across the country, the supply of these devices has failed to keep pace.

### Why the Shortage Exists

Several factors have combined to create the current transformer crisis.

### Surging Electricity Demand

For years, U.S. electricity demand remained relatively stable. That trend has now reversed. Rapid growth in artificial intelligence data centers, electric vehicles, manufacturing facilities, and electrified heating systems has dramatically increased power consumption. Renewable energy projects such as wind and solar farms also require large numbers of transformers to connect to the grid.

According to research from Wood Mackenzie, demand for power transformers has risen more than 100% since 2019, while demand for generator step-up transformers used in large power facilities has surged even more dramatically.

### Aging Infrastructure

America's electrical infrastructure is old. Many transformers currently operating on the grid were installed decades ago and are approaching or exceeding their intended lifespan. Industry reports estimate that more than half of U.S. distribution transformers are over 33 years old.

As older equipment fails, utilities must replace transformers while also trying to expand grid capacity. This creates simultaneous replacement and expansion demand.

Continued on Page 30



# EXTEND THE LIFE OF YOUR ELECTRICAL EQUIPMENT

## Electrical Solutions Experts

Advanced Electrical & Motor Controls (AEAMC) specializes in electrical solutions for discontinued electric power distribution equipment, including:

- Molded case circuit breakers
- Insulated case circuit breakers
- Motor controls
- UL-508A panelboards

Trust AEAMC to deliver innovative, cost-effective solutions that extend equipment life with minimal downtime. Our in-house technicians test and recondition our products to the highest standards in the industry and provide 24/7 disaster and emergency response.



Contact us for custom engineered solutions.



LEARN MORE



1801 Hurd Dr., Irving, TX 75038  
800-289-2757 | [aeamc.com](http://aeamc.com)

**OEM Custom Switchboards**

- UL Certified Switchboards
- NEMA 1, NEMA 3R
- Plug In Style Breakers
- 45"-60" Feeder Sections



Automated state of the art fabricating machines



Switchboards covering the industry standard



ABB engineering and innovation



Feeder sections 45"-60" wide



**Power Panelboards**



Panelboard designs can be modified on-site or come pre-assembled for easier installation.



Quickly and efficiently install these readily available panelboards from our inventory.

- ⚡ Streamlined Production
- ⚡ Powder Coating
- ⚡ Switchboards & Panelboards in Stock
- ⚡ Fast Turnaround
- ⚡ ABB Authorized

Powered by **ABB**

⚡ 888-599-0486

⚡ [bcsswitchgear.com](http://bcsswitchgear.com)

⚡ [bill@bcsswitchgear.com](mailto:bill@bcsswitchgear.com)

**AUCTIONEERS!**

**Keep The Electrical Advertiser In Mind For Your Auction Plans in 2026. We also offer Email Blasts and Banner Advertising on our Website.**

**Visit [www.electricaladvertiser.com](http://www.electricaladvertiser.com) to see an example of current Auction Banners.**

**Please Call James at 800-328-0328 for advertising rates and deadlines**

**WHAT'S NEW?**

**THE ELECTRICAL ADVERTISER**

**Accepts Press Releases!**

**For More Information Contact**

**Tammy Ybarra**

**1-800-328-0328**



# J&P ELECTRICAL COMPANY

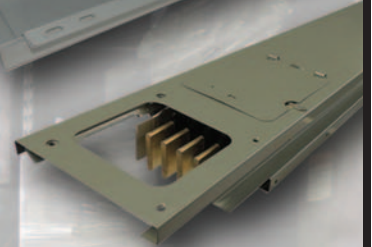


**877-844-5514**

**WWW.JPELECTRICALCOMPANY.COM**

## **BUYING & SELLING** **ALL MAJOR MANUFACTURERS**

**GENERAL ELECTRIC  
SIEMENS  
SQUARE D  
ALLEN BRADLEY  
WESTINGHOUSE  
CUTLER HAMMER  
AND MUCH MORE**



**TRANSFORMERS  
BUS PLUGS & DUCT  
DISCONNECTS  
PANEL SWITCHES  
BREAKERS / AIR  
SWITCHGEAR  
FUSES  
STARTERS  
RELAYS**

**QUALITY USED, RECONDITIONED & NEW  
SURPLUS ELECTRICAL EQUIPMENT.  
SPECIALIZING IN COMPLETE  
ELECTRICAL REMOVAL.**



**STORE.EBAY.COM/JP-ELECTRICAL-COMPANY**

# WE BUY & SELL ELECTRICAL SURPLUS

*Over 60,000 sq. ft. of stock available*

**CIRCUIT BREAKERS • BUSS PLUGS • FUSES  
MOTOR CONTROL CENTER INSERTS  
TRANSFORMERS • STARTERS  
MICRO SWITCHES • PANELBOARD INSERTS  
DISCONNECT SWITCHES AND MUCH MORE**

**We Carry All Major Manufacturers Including:**



**EATON**

**SIEMENS**



**Allen-Bradley**

**SYLVANIA**

**FEDERAL PACIFIC**



**Littelfuse**

**TDK**

**MOELLER**

**MURRAY**

# P & F SUPPLY COMPANY

**888-294-3586 • [pfsupply.com](http://pfsupply.com)**

**1135 Broadway North West, Grand Rapids, Michigan 49504 • [sales@pfsupply.com](mailto:sales@pfsupply.com)**



*P&F Supply Co. has been a family owned business for over 70 years and a proud member of PEARL.*

# Pringle Switches.

You might not see these every day, but we do.

Complete switches and parts from 800-5000 Amp.



New 3000 & 4000 Amp in Stock  
Same Day Shipping  
Replacement Mechs  
Reconditioned and Certified Available



800-421-5082  
sales@qualityswitchgear.com

# WHEN YOU NEED IT NOW, SWITCHGEAR POWER SOLUTIONS DELIVERS

## New, Reconditioned & Obsolete Equipment

- Circuit Breakers
- Motor Controls
- Switchboards/Panelboards
- Custom Switchgear
- Transformers
- Fusible Panelboard Switches
- Bolted Pressure Switches
- Mounting Hardware Kits
- Bus Duct Plugs



## Engineering & Safety Compliance

- Arc Flash Risk Assessment
- Infrared Thermography Testing
- Electrical Reliability & Repair Services
- 24-Hour Emergency Service
- Electrical Safety & NFPA 70E Training



Contact us today to schedule a free condition assessment.



LEARN MORE



901 Forest Avenue, Sheboygan Falls, WI 53085  
920-234-2500 | [switchgearpowersolutions.com](http://switchgearpowersolutions.com)



# GENERATOR SOLUTIONS FOR YOUR HOME AND BUSINESS! SUMMER SALE

## WINCO GENERATORS - [www.wincogenerator.com](http://www.wincogenerator.com)

# CALL TODAY 1-800-328-0328

### PACKAGED STANDBY AND AFFORDABLE DIESELS

Our most popular Standby model is the **PSS8**. It can be placed in both prime and standby applications so it is just as appropriate for a remote pump as it is for your house. At **\$5593.60** it is priced right for business and home use.



The **W6010DE** at only **\$5851.20** is the most affordable, most serviceable, and most reliable air-cooled diesel ever. This unit is appropriate all the way from home use, to job sites, to emergency response vehicles.



### COMMERCIAL AND INDUSTRIAL GENERATORS

You expect the best, you get the best. The **WL12000HE** with a **Honda GX630** Engine is better than ever including improved adaptability, quieter operation, and greater fuel efficiency.

**ONLY \$5032.40**



It doesn't get much more powerful than our **WL18000VE**. While there is one competitor on the market, it is not an equal. This industrial grade unit sells for **\$6062.80**



### PORTABLE TRI-FUEL GENERATOR

The **HPS12000HE** was built with versatility in mind.

It is the only Tri-Fuel capable, Honda-powered generator on the market that **DOES NOT** void the engine warranty. It's constructed with the same engine and generator end we use on our Industrial **WL12000HE**. **Only \$4495.00**



7 — AAA Electrical Equipment Chatsworth, CA 800-708-4310	— Briggs & Stratton Gen Nationwide 800-328-0328	Wrap—EMSCO Fridley, MN 800-328-1842	34 — National Power Equipment Brookpark, OH 800-647-0815	9 — StakMax Hampshire, IL 847-321-8035
8 — Advanced Elec & Mtr Ctrls Irving, TX 972-579-1460	28 — Bruce Electric Equip Lindenhurst, NY 800-262-2204	18 — Gensco Equip Co LTD Toronto, ON 800-268-6797	23 — Nevada Distribution & Cntrl Las Vegas, NV 888-253-2263	20 — Steelman Industries Inc Kilgore, TX 800-354-5827
Wrap— Advanced Elec & Mtr Ctrls Irving, TX 800-289-2757	33 — Bulldog Benders Nationwide 800-328-0328	17 — Globe Electric Sply Co Inc Long Island City, NY 800-458-7584	11 — P & F Supply Co Grand Rapids, MI 888-294-3586	29 — Sunbelt Solomon Sharon, PA 800-433-3128
20 — Albany Industrial Sply Inc Albany, NY 800-254-2584	34 — California Breakers & Ctrls South Gate, CA 323-564-4777	18 — H & H Tool Service Inc Houston, TX 713-682-8665	4 — PEARL Nationwide pearl1.org	13 — Switchgear Pwr Sol Sheboygan Falls, WI 920-234-2500
25 — All Current Electric Pennsauken, NJ 800-223-0483	34 — Central Breaker & Control Oxford, MA 508-731-6181	22 — Hialeah Meter Co Hialeah, FL 800-654-0821	12 — Quality Switchgear Inc Valley View, TX 800-421-5082	31 — T & R Electric Colman, SD 800-843-7994
19 — All United Elec Solutions Houston, TX 877-514-2331	22 — Circuit Breaker Sales NE Seymour, CT 203-888-7500	16 — Industrial Ctrl & Sply Whittier, CA 800-433-7443	21 — Select Equipment Co Kokomo, IN 800-697-0311	35 — Technitrol Inc Germantown, WI 800-263-1170
34 — American Breakers Santa Ana, CA 888-317-6500	25 — City Circuit Breakers Santa Ana, CA 800-464-0540	10 — J & P Electrical Sply Co Warren, MI 877-844-5514	34 — SFO Representatives San Carlos, CA 866-484-4736	— Trumbull Tools Nationwide 800-328-0328
23 — Arck Electric Supply Rockledge, FL 321-632-9593	3 — Contractors Choice Inc Cincinnati, OH 800-670-8665	20 — J & T Electrical Supply Oxford, MI 248-628-6999	34 — Southbay Electrical Supply El Monte, CA 626-401-0111	22 — Underground Devices Northbrook, IL 847-205-9000
— Arcman Corp Throop, PA 570-489-6402	19 — D & F Liquidators Inc Hayward, CA 800-458-9600	Wrap— JCL Energy Sharon, PA 727-983-1300	17 — Southern Elec Resource Lilburn, GA 877-512-6600	5 — Utah Breakers & Sply Salt Lake City, UT 800-805-6557
9 — BCS Switchgear Krugerville, TX 888-599-0486	Wrap — Denver Breaker & Supply Denver, CO 800-544-7375	2 — M & J Electrical Sply Houston, TX 713-699-5055	Wrap — Southland Electrical Burlington, NC 800-476-1486	34 — Volunteer Equipment Knoxville, TN 866-573-7768
36 — BD Electrical Inc Howell, MI 800-548-7904	1 — East Coast Bkr Supply Avenel, NJ 800-376-5657	34 — MCC Electrical Sply Corp Ventura, CA 805-642-1507	23 — Southwestern Elec Sales Irving, TX 800-514-0311	35 — Winco Inc Le Center, MN 800-328-0328
36 — Belyea Co Inc Easton, PA 610-515-8775	Wrap — Electric.com Wheat Ridge, CO 303-816-6942	30 — Metering Sales & Service Huntingdon Valley, PA 888-436-3837	25 — Specialty Elec Supply Joliet, IL 815-726-4027	
32 — Bill Jones Equipment Livingston, TX 800-205-6593	30 — Electric Equip Corp Washington, DC 703-550-7400	35 — ML Electrical Equipment Van Nuys, CA 818-781-3935	— SP Products Inc Nationwide 800-328-0328	
16 — Breaker Hunters Inc Pounding Mill, VA 800-843-6797	19 — Electrical Svc Prods Inc Spokane, WA 800-664-4377	30 — Myers Enterprises Burlington, NC 336-229-5588	— Spyder Products Nationwide 800-328-0328	

# SIEMENS SB Breakers

**Sole Authorized Siemens SB Breaker Distributor**

*If you don't find it on our website...give us a call "We just may have it".*

Premier Full Line **SIEMENS** Distributor



WL Low Voltage Breakers



Siemens Busway & BusPlugs



Siemens MCC Buckets



Siemens LGB, HGB, NGB  
Circuit Breakers



VL Thermal-Mag and  
Electronic Circuit Breakers



PTS4 Test Kit



Siemens Combination Starters



**Phone: 562.692.0228 - Fax: 562.692.0735**

Email: [sales@siemensSBbreakers.com](mailto:sales@siemensSBbreakers.com) or [sales@fergieman.com](mailto:sales@fergieman.com)

**Providing Quality Service Since 1974**  
**AVAILABLE FOR IMMEDIATE DELIVERY**



**BREAKER HUNTERS, INC.**  
*Breakers, Starters, and more!*

520 Claypool Hill Mall Rd | Cedar Bluff, VA 24609 | [sales@breakerhunters.com](mailto:sales@breakerhunters.com) | Fax: 1-276-963-3572

Call Toll Free

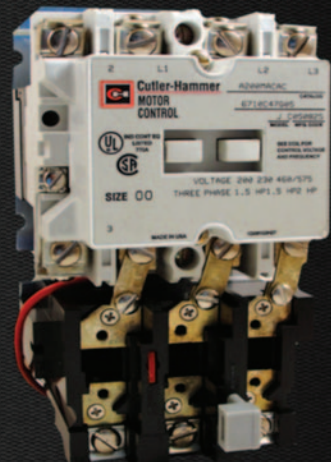
**1-877-963-4543**



**Circuit Breakers**



**Parts  
&**



**Motor Controls**

**WWW.BREAKERHUNTERS.COM**

**Eaton / Cutler-Hammer, General Electric, Siemens, Square D and More**

**SPECIAL ELECTRICAL ADVERTISER PROMO:**  
**USE CODE EAS IN YOUR SHOPPING CART BEFORE CHECKOUT FOR 5% OFF**

# GLOBE

ELECTRIC SUPPLY CO., INC.

33-70 10th Street Long Island City, NY 11106  
 Tel: 718-932-1820 • 800-221-1500 • Fax: 718-726-5008  
 Email: [sales@globeelec.com](mailto:sales@globeelec.com)  
 Website: [WWW.GLOBEELEC.COM](http://WWW.GLOBEELEC.COM)

Globe Electric Supply carries one of the largest inventories of industrial electrical supplies in the United States. We carry electrical merchandise of all types, including **Hard-to-Find** and **Obsolete** products.

1-800-221-1500



**Conduit Fittings**  
 Large assortment of all types of conduit fittings, all sizes and types, malleable iron and aluminum, threaded and set screw.



**Explosion Proof Items**  
 Extensive inventory in stock of all types of boxes and connectors, receptacles and plugs, flexible conduit, light fixtures and controls from major manufacturers.



**Lighting Fixtures & Bulbs**  
 Globe stocks commercial and industrial lighting fixtures and lamps. From incandescent to fluorescent - from metal halide to explosion proof and vaporite - including lamps, and fixtures for designer applications.



**Circuit Breakers**  
 Globe Electric stocks current and obsolete circuit breakers from all major brands, in all voltages, amperages and models, including mounting hardware and accessories.



**Motor Controls**  
 Globe stocks a huge selection of current and obsolete motor controls, starters, contactors, pushbuttons and relays from all manufacturers, including contact kits, coils & replacement parts.



**Obsolete Products**  
 From hard-to-find circuit breakers and wiring devices, to obsolete and discontinued panel board switches and fuses - Globe has the products you need



**Plugs, Receptacles & Switches**  
 We stock wiring devices in all types and configurations from all major manufacturers - including pin and sleeve devices and wiring devices in obsolete and hard-to-find designs up to 400 AMP.



**Bus Plugs & Panelboard Switches**  
 We stock present and obsolete models - new and reconditioned - including hard-to-find models. Available in most sizes and types.



**Lugs & Terminals**  
 Copper and aluminum, mechanical and compression types, assorted styles and applications.



**Safety Switches**  
 We stock a massive inventory of disconnect switches in all voltages from 30 to 1200 amps, as well as double throw switches & disconnects in Nema 1 through Nema 7.



**Fuses & Fuse Blocks**  
 As an authorized distributor for both Ferraz-Shawmut and Bussmann, we stock all sizes of fuses in voltages up to 6000 amps.



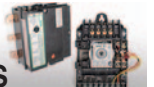
**PVC Coated Items**  
 Globe Electric stocks an extensive inventory of PVC coated conduit and fittings from Ocal and Robroy.

## LINE CARD

Adalet	Crouse Hinds	Juno	Pyle-National
AFC Cable	Cutler Hammer	Killark	Rob Roy
Allen-Bradley	Dossert	Leviton	Russellstoll
Allied Tube	Efor	Lithonia	Siemens
American Fittings	Federal Pacific	Mennekes	Square-D
Appleton	Federal	Merson	SteelCity
ASCO	Signal	Murray	Tech Lighting
Boltswitch	Feedrail	NSI / Tork	Thomas & Betts
Bryant	Ferraz-Shawmut	Northern Cable	Ushio
Burndy	General Electric	Ocal	Walker
Bussmann	Hazlux	Omni Cable	Westinghouse
Cerro Wire	Hubbell Lighting	O-Z/Gedney	Wiremold
Colonial Wire & Cable	Hubbell Wiring	Pass & Seymour	Zinsco
Cooper Wiring	IlSCO	Pauluhn	
	ITE	Penn Union	

**LARGEST INVENTORY**

**ASCO CONTACTORS**



## Residential, Commercial & Industrial Circuit Breakers



CIRCUIT BREAKER MTG. HDWR.  
 BUSS DUCT PLUGS  
 CIRCUIT BREAKERS  
 AIR BREAKERS  
 MOTOR CONTROL  
 PANEL MOUNT SWITCH  
 SAFETY SWITCHES  
 TRANSFORMERS



4305 Lilburn Industrial Way • Lilburn, GA 30047

**Toll Free: 877-512-6600**

Phone: 770-263-6600 • Fax: 770-263-6619

Email: [sales@sercoga.com](mailto:sales@sercoga.com) • [www.sercoga.com](http://www.sercoga.com)



# D&F

Liquidators

Buyers and Suppliers of  
Electrical Construction  
Materials.

P.O. Box 4717, Hayward, CA 94540  
1810 W. Winton Avenue, Hayward, CA 94545

Find Us On The Internet  
[www.dfliq.com](http://www.dfliq.com)

The nation's largest surplus electrical  
construction materials inventory.

## SPECIALIZING IN:

- Crouse Hinds
- T&B
- Burndy
- plugs
- controls
- conduit
- Appleton
- OZ/Gedney
- condulets
- circuit breakers
- strut
- fuses
- and more...

Call Us . . . We Can Help!

# 800-458-9600

Ph: 510-785-9600 Fax: sales 510-785-1668 buyer 510-785-6210

# ESP



Electrical Service Products, Inc.

110 N. Greene - Spokane WA 99202  
800-664-4377 - fax: 509-535-3632

A COMPLETE SOURCE FOR ELECTRICAL SUPPLIES  
NEW-RECONDITIONED-USED



- Circuit Breakers & Hardware
- Motor Control • Starters
- Safety Switches • Switchgear
- Panelboard Switches
- Bus Duct Switches
- Marincio Wiring Devices
- Transformers • Fuses
- Large Selection of Conduit Fittings

email: [sales@espelectrical.com](mailto:sales@espelectrical.com)

check stock online at [www.espelectrical.com](http://www.espelectrical.com)

# AllUnited

ELECTRICAL SOLUTIONS

HONESTY. INTEGRITY. HONOR

(877) 514-2331

CUSTOM CONTROLS  
STARTERS & CONTACTORS  
PANELBOARDS  
CIRCUIT BREAKERS  
SAFETY SWITCHES  
TRANSFORMERS

[AllUnited.com](http://AllUnited.com)





Call/Text: 248-628-6999  
Toll Free: 800-382-5793  
www.jtelectrical.com

## ELECTRICAL SUPPLY

3606 Thomas Rd. - Oxford, MI 48371

### SIEMENS

AUTHORIZED DISTRIBUTOR

IN-HOUSE PANEL SHOP PROVIDING  
IN STOCK UP TO 2000 AMPS

- ❖ P1, P2, P3, P5 Panelboards
- ❖ Switchboards
- ❖ Transformers

COMPETITIVE PRICING



### We Buy & Sell All Major Brands

New, Reconditioned, & Obsolete Electrical Equipment

- |                                 |                      |
|---------------------------------|----------------------|
| ❖ Bus Plugs                     | ❖ Generac Generators |
| ❖ Bus Duct                      | ❖ IMO Automation     |
| ❖ Transformers                  | ❖ OZ Gedney Fittings |
| ❖ Circuit Breakers              | ❖ Mersen Fuses       |
| ❖ Motor Control & Renewal Parts | ❖ And Much More!     |

AVAILABLE FOR LOCAL & NATIONWIDE SHIPPING

## ALBANY INDUSTRIAL SUPPLY INC.

438 S. Pearl St., Albany, NY 12202

PH: 800-254-2584  
518-465-4030

Fax: 800-595-1910  
518-465-0799

### BUYING & SELLING ELECTRICAL SUPPLIES!

TRANSFORMERS • STARTERS • FITTINGS • CIRCUIT BREAKERS  
FIRE ALARM EQUIPMENT • FUSES • NEW & OBSOLETE

**WANTED:**  
*Your Excess  
Electrical Inventory!*

Special Interest in  
Explosion Proof Fittings  
T & B • Raco • Crouse-Hinds  
Appleton • O. Z.

**Specializing in  
Square D I-Line  
Breakers & Panels**

Substantial Savings on  
New Surplus and  
Remanufactured Equipment

### LARGE INVENTORY IN STOCK

- |                 |                 |
|-----------------|-----------------|
| • GE            | • T&B           |
| • Square D      | • Raco          |
| • Allen-Bradley | • Crouse-Hinds  |
| • Cutler Hammer | • Appleton      |
| • Westinghouse  | • Bussman       |
| • FPE           | • Killark       |
| • ITE           | • Gould Shawmut |
| • O.Z.          |                 |

**E-Mail: AlbanyIndustrial@gmail.com**

# PHASE CONVERTERS POWER FACTOR CORRECTION CAPACITORS

*The Power You Need  
The Quality You Deserve*

*Offer Your Customer A Great Way  
to Improve Their Power Factor*

- ❖ Convert Single Phase to Three Phase
- ❖ Rotary for Multi-Motor Applications
- ❖ One Year Warranty on Generator Motor
- ❖ Two Year Warranty on Higher Voltage Capacitors



- ❖ 100 KVAR & Up Automatic
- ❖ .5 to 400 KVAR Fixed
- ❖ 240 volt, 480 volt & 600 volt
- ❖ Improve Power Factor
- ❖ Increase System Capacity
- ❖ Save Power & Money
- ❖ Call for your free KVAR Application Guide



**STEELMAN INDUSTRIES**

P.O. BOX 1461

KILGORE, TX 75662

**800-337-5827**

[www.steelman.com](http://www.steelman.com)  
[sales@steelman.com](mailto:sales@steelman.com)

# ELECTRICAL CONTRACTORS

ARE YOU LOOKING FOR  
HARD TO FIND ELECTRICAL  
PRODUCTS?

**Use PowerQuote at  
electricaladvertiser.com**

*IT'S FAST, EASY AND IT WORKS*

*OVER 80 CATEGORIES AVAILABLE*

*(The Electrical Advertiser Has Sent Over  
18 Million PowerQuotes)*



**A SAFER  
WAY TO GET  
THINGS  
DONE!**

**New And  
Used Models**

[www.simpleliftrentals.com](http://www.simpleliftrentals.com)  
**515-227-5118**  
[simpleliftrentals@gmail.com](mailto:simpleliftrentals@gmail.com)



**TOWABLE 45' BOOM LIFT**

Working Height: 51'  
Platform Height: 45'  
Horizontal Outreach: 27'  
Up & Over Clearance: 20'9"  
Lift Capacity: 500 lbs  
Length (stowed): 20' 8"

**TOWABLE 55' BOOM LIFT**

Working Height: 61'  
Platform Height: 55'  
Horizontal Outreach: 33' 5"  
Up & Over Clearance: 23' 1"  
Lift Capacity: 500 lbs  
Length (stowed): 23' 8"



**SELECT  
EQUIPMENT**  
*Industrial Electrical Sales*

101 W NORTH STREET • KOKOMO, IN 46901

**800-697-0311**

[www.selectequipment.net](http://www.selectequipment.net)  
[sales@selectequipment.net](mailto:sales@selectequipment.net)

## MCC BUCKETS & MOTOR CONTROL CENTERS



Largest MCC Bucket  
Inventory In The Midwest!

Your  
MCC  
Bucket  
Experts!



We can retrofit any make and model of MCC bucket with all new  
components including: VFD's, Soft Starters, Nema & IEC Starters

We Stock &  
Retrofit All  
Makes &  
Models Of  
MCC Buckets!



Custom Built  
MCC Buckets



**SQUARE D**

by Schneider Electric

**EATON**

Cutler-Hammer

**SIEMENS**



**Allen-Bradley**



# WHAT'S NEW?

THE **ELECTRICAL**  
ADVERTISER

**Accepts  
Press  
Releases!**

For More Information  
Contact  
Tammy Ybarra

**1-800-328-0328**



## HUGE Inventory

- Remanufactured Meters (Singlephase/Polyphase)
- New Solid State Meters
- Meter Mounting Equipment
- Indoor/Outdoor Instrument Transformers

Brands We Carry

Aclara    MILBANK

  Honeywell  
E-Mon Submeter

**10% OFF** Offer available to all Electrical Advertiser customers with a \$100 minimum order.

 **HIALEAH METER**  
Meters you can count on since 1954

EA-11-2022

800.654.0821 - [www.HialeahMeter.com](http://www.HialeahMeter.com)

## FABRICATED DUCT SPACER

- Off-site duct bank assembly is possible, allowing for labor savings
- A safer installation - less time is needed in the trench
- Do more work outside of the ditch instead of in the ditch
- Cannot fall or tip over
- Easy flow of concrete through the spacers during concrete pour
- Fits all types and sizes of conduit
- Any configuration and conduit separation can be maintained



**UNDERGROUND DEVICES**  
INCORPORATED

3304 COMMERCIAL AVENUE • NORTHBROOK, ILLINOIS 60062  
Phone: (847) 205-9000 • Fax: (847) 205-9004  
Website: <http://www.udevices.com>

# WANT TO BUY

## EXPLOSION PROOF (FITTINGS, BOXES, LIGHTS, ETC)

Also **MOGULS** • FS/FD Cast Iron Device Boxes

- Expansion/Deflection Coupling
- Form 7 Condulets • Plasti-Bond Fittings
- Pin and Sleeve / Arktite Plugs / Receptacles
- Crouse Hinds • Appleton
- OZ Gedney • Killark • T&B

**SOUTHWESTERN ELECTRICAL SALES, INC.**  
[www.swelectricalsales.com](http://www.swelectricalsales.com)

3300 CONFLANS RD. IRVING, TEXAS 75061

**1-800-514-0311**

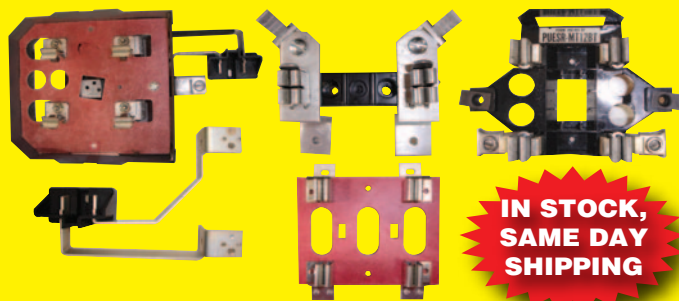
(972) 514-0311 • FAX (972) 513-0319

[manager@southwesternelectricalsales.com](mailto:manager@southwesternelectricalsales.com)

# Arck Electrical Supply

## 321-632-9593

Meter socket and breaker buss repair kits for current and obsolete stacks



**IN STOCK,  
SAME DAY  
SHIPPING**

Send us pictures of your parts needs  
[arckelectric@earthlink.net](mailto:arckelectric@earthlink.net)

### WE BUY METER STACKS!!!

# NEVADA

## DISTRIBUTION & CONTROL

### LAS VEGAS, NV

#### WE SELL

## New Reconditioned & Obsolete CIRCUIT BREAKERS

### ALL MAJOR MANUFACTURERS

#### ALSO

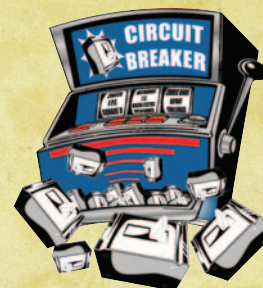
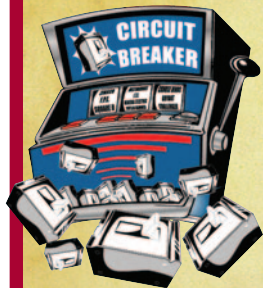
Transformers • Panelboards • Mounting Hardware • Insulated Case Breakers  
Bus Plugs • Motor Controls • Air Circuit Breakers • Fusible Panelboard Switches

**WE BUY EXCESS INVENTORIES • TESTING AND REPAIR SERVICE**

### OVER 50 YEARS EXPERIENCE

### 24 HOUR EMERGENCY SERVICE AVAILABLE

**(888) 253-2263 • [www.ndccircuitbreakers.com](http://www.ndccircuitbreakers.com)**



# Electrical QuickLinks

- AAA Electrical Equipment - [www.aaaelectrical.net](http://www.aaaelectrical.net)  
Ace Breakers Controls & Distribution - [www.acebreakers.net](http://www.acebreakers.net)  
Advanced Motor Controls - [www.AEAMC.com](http://www.AEAMC.com)  
All Current Electric - [www.allcurrent.com](http://www.allcurrent.com)  
Alpha Breakers & Controls - [www.alpha-breakersandcontrols.com](http://www.alpha-breakersandcontrols.com)  
American Breakers - [www.americanbreakersca.net](http://www.americanbreakersca.net)  
American West Surplus - [www.americanwestsurplus.com](http://www.americanwestsurplus.com)  
Any Breakers - [www.anybreakers.com](http://www.anybreakers.com)  
Arca Supply - [www.arcasupply.com](http://www.arcasupply.com)  
Arck Electric Supply - [www.arkelectric.com](http://www.arkelectric.com)  
Asher Power - [www.asherpower.com](http://www.asherpower.com)  
Astro Controls Inc - [www.AEAMC.com](http://www.AEAMC.com)  
Atlas Electric Inc - [www.atlaselectricinc.com](http://www.atlaselectricinc.com)  
B & B Trading - [www.bb-trading.com](http://www.bb-trading.com)  
Bay Power - [www.baybreakers.com](http://www.baybreakers.com)  
Bay Power Modesto - [www.circuitbreakerservice.com](http://www.circuitbreakerservice.com)  
Bay Power San Jose - [www.lonestarbreaker.com](http://www.lonestarbreaker.com)  
BCS Switchgear - [www.bcsswitchgear.com](http://www.bcsswitchgear.com)  
BD Electrical Inc - [www.bdelectrical.com](http://www.bdelectrical.com)  
Belyea Co Inc - [www.belyeapower.com](http://www.belyeapower.com)  
Brand New Electric - [www.brandnewelec.com](http://www.brandnewelec.com)  
Breaker Broker - [www.breakerbroker.com](http://www.breakerbroker.com)  
Breaker Hunters - [www.breakerhunters.com](http://www.breakerhunters.com)  
Breaker King - [www.breakerking.com](http://www.breakerking.com)  
Breakers & Controls Florida Inc - [www.breakerscontrolsfl.com](http://www.breakerscontrolsfl.com)  
Brilliant Equipment Sales - [www.brilliantelec.com](http://www.brilliantelec.com)  
Bruce Electric - [www.bruceelectric.com](http://www.bruceelectric.com)  
Central Breakers & Control - [www.centralbreakerandcontrol.com](http://www.centralbreakerandcontrol.com)  
Central Valley Elec Sply - [www.cves.net](http://www.cves.net)  
Circuit Breaker City - [www.circuitbreakercity.com](http://www.circuitbreakercity.com)  
Circuit Breaker Guys - [www.cbguys.com](http://www.cbguys.com)  
Circuit Breaker Sales NE - [www.circuitbreakersalesne.com](http://www.circuitbreakersalesne.com)  
Circuit Breaker Superstore - [www.circuitbreakersuperstore.com](http://www.circuitbreakersuperstore.com)  
Coastside Circuit Breaker LLC - [www.coastsidecircuitbreaker.com](http://www.coastsidecircuitbreaker.com)  
Contractor's Choice Inc - [www.cctoolsequipment.com](http://www.cctoolsequipment.com)  
Cowntown Breakers - [www.cowntownbreakers.com](http://www.cowntownbreakers.com)  
D & F Liquidators Inc - [www.dfliq.net](http://www.dfliq.net)  
Dan Luckow Electrical Inc - [www.danluckowelectricinc.com](http://www.danluckowelectricinc.com)  
Dejohn's Electrical Sales Inc - [www.dejohnselectrical.com](http://www.dejohnselectrical.com)  
Denver Breaker & Supply - [www.denverbreaker.com](http://www.denverbreaker.com)  
Downey Circuit Breakers - [www.Downeybreakers.com](http://www.Downeybreakers.com)  
E G And Sons Sales Inc - [www.egandsons.com](http://www.egandsons.com)  
East Coast Breaker Supply - [www.eastcoastbreaker.com](http://www.eastcoastbreaker.com)  
Edison Elect Surplus - [www.edisonelectricalsurplus.com](http://www.edisonelectricalsurplus.com)  
Electric Barn - [www.electricbarn.com](http://www.electricbarn.com)  
Electric Motor Supply Co - [www.emscomn.com](http://www.emscomn.com)  
Electric South - [www.electricsouth.com](http://www.electricsouth.com)  
Electrical.com - [www.electrical.com](http://www.electrical.com)  
Electrical Eng & Service Co - [www.eescousa.com](http://www.eescousa.com)  
Electrical Power & Control - [www.electricalpowerandcontrol.com](http://www.electricalpowerandcontrol.com)  
Electrical Service Prods Inc - [www.espelectrical.com](http://www.espelectrical.com)  
EP&C Electrical Products & Control - [www.epandc.com](http://www.epandc.com)  
Gensco - [www.genscoequip.com](http://www.genscoequip.com)  
Globe Electric Supply - [www.globeelec.com](http://www.globeelec.com)  
Hialeah Meter Co - [www.hialeahmeter.com](http://www.hialeahmeter.com)  
Industrial Control & Supply - [www.fergieman.com](http://www.fergieman.com)  
Industrial Equip Recovery - [www.ier-online.com](http://www.ier-online.com)  
Industrial Surplus - [www.industrial-surplus.com](http://www.industrial-surplus.com)  
J & P Electrical Co - [www.jpelectricalcompany.com](http://www.jpelectricalcompany.com)  
J & S Circuit Breaker - [www.jandscircuitbreakers.com](http://www.jandscircuitbreakers.com)  
JDM Supply LLC - [www.jdmsupplyllc.com](http://www.jdmsupplyllc.com)  
JW Electrical Supply - [www.jwelectricalsupply.com](http://www.jwelectricalsupply.com)  
Kodiak Breakers & Supplies - [www.kodiakbreakers.com](http://www.kodiakbreakers.com)  
Lanco Contact Co - [www.lancocontacts.com](http://www.lancocontacts.com)  
Lectric Connection - [lectricconnection.com](http://lectricconnection.com)  
M & J Electrical Supply - [www.mnjelectrical.com](http://www.mnjelectrical.com)  
Many Circuit Breakers - [www.manycircuitbreakers.com](http://www.manycircuitbreakers.com)  
MGA Electric - [www.mgaelectric.net](http://www.mgaelectric.net)  
Midwest Switchgear Division - [www.swgr.com](http://www.swgr.com)  
ML Electrical Equip - [www.mlelectricalequipment.com](http://www.mlelectricalequipment.com)  
MR Breaker - [www.mrbreaker.com](http://www.mrbreaker.com)  
National Circuit Breaker - [www.nationalcircuitbreaker.com](http://www.nationalcircuitbreaker.com)  
National Power Equipment Inc - [www.npeinc.com](http://www.npeinc.com)  
National Switchgear Sys - [www.nationalswitchgear.com](http://www.nationalswitchgear.com)  
Nationwide Elec Sply - [www.nationwideelectric.com](http://www.nationwideelectric.com)  
NECA - [www.necanet.org](http://www.necanet.org)  
Nelco Electric Supply - [www.nelcoelectricssupply.com](http://www.nelcoelectricssupply.com)  
North American Switchgear - [www.naswgr.com](http://www.naswgr.com)  
Oregon Breakers - [www.oregonbreakers.com](http://www.oregonbreakers.com)  
Orange County Circuit Breaker - [www.occb.net](http://www.occb.net)  
P & F Supply Co - [www.pfsupply.com](http://www.pfsupply.com)  
PEARL - [www.pearl1.org](http://www.pearl1.org)  
Power Breakers - [www.powerbreakers.com](http://www.powerbreakers.com)  
Quality Switchgear Inc - [www.qualityswitchgear.com](http://www.qualityswitchgear.com)  
Regional Breaker Sales - [www.regionalbreakersales.com](http://www.regionalbreakersales.com)  
RG Industries - [www.rgindustries.net](http://www.rgindustries.net)  
RS Electrical Supply - [www.rselectricalsupply.com](http://www.rselectricalsupply.com)  
Salinger Electric - [www.salingerelectric.com](http://www.salingerelectric.com)  
Santa Ana Circuit Breakers - [www.santaanacircuitbreakers.com](http://www.santaanacircuitbreakers.com)  
SC Electric Inc - [www.scelectric.com](http://www.scelectric.com)  
Select Breakers LLC - [www.selectbreakers.com](http://www.selectbreakers.com)  
Select Equipment Co - [www.selectequipment.net](http://www.selectequipment.net)  
SFO Representatives - [www.sforeps.com](http://www.sforeps.com)  
Sierra Circuit Breaker LLC - [www.ebreaker.com](http://www.ebreaker.com)  
Silicon Valley Breakers & Controls - [www.svbcinc.com](http://www.svbcinc.com)  
Simply Breakers - [www.simplybreakers.com](http://www.simplybreakers.com)  
Southern Electrical Resources - [www.sercoga.com](http://www.sercoga.com)  
Southland Electrical Sply - [www.southlandelectrical.com](http://www.southlandelectrical.com)  
Spectrum Industries - [www.spectrumind.com](http://www.spectrumind.com)  
Sunbelt Solomon - [www.sunbeltsolomon.com](http://www.sunbeltsolomon.com)  
Switchgear Exchange - [www.switchgear-exchange.com](http://www.switchgear-exchange.com)  
Switchgear Power Solutions - [www.switchgearpowersolutions.com](http://www.switchgearpowersolutions.com)  
T&R Electric - [www.t-r.com](http://www.t-r.com)  
The Circuit Breaker Source - [www.thecircuitbreakersource.com](http://www.thecircuitbreakersource.com)  
The Motor Control Co - [www.electricalcontactkits.com](http://www.electricalcontactkits.com)  
Triple C Electric - [www.triplec-electric.com](http://www.triplec-electric.com)  
Underground Electric Supply - [www.undergroundelectricsupply.com](http://www.undergroundelectricsupply.com)  
United Circuit Breaker Inc - [www.unitedcircuitbreakers.com](http://www.unitedcircuitbreakers.com)  
Upstate Wholesale Breakers - [www.upstatebreakers.com](http://www.upstatebreakers.com)  
Utah Breakers & Supply - [www.utahbreakers.com](http://www.utahbreakers.com)  
VIP Electric Supply - [www.vipelectricsupply.com](http://www.vipelectricsupply.com)  
Volunteer Equipment Supply - [www.volequip.com](http://www.volequip.com)  
West Coast Components - [www.westcoastcomponents.com](http://www.westcoastcomponents.com)  
Western Enterprises - [www.westernenterprisessupply.com](http://www.westernenterprisessupply.com)  
Winco Generators - [www.wincogenerator.com](http://www.wincogenerator.com)  
Worldwide Electric Salvage - [www.worldwideelectricsalvage.com](http://www.worldwideelectricsalvage.com)  
YAGI Electrical & Industrial - [www.yagionline.com](http://www.yagionline.com)

Mention Promo Code EA2014 and **RECEIVE 10% OFF!**

# YES... WE HAVE THAT!



Nation's Largest Inventory of NEW, Inspected & Tested & Obsolete!

- Circuit Breakers • Panel Mount Switches • Motor Controls
- Bus Duct Plugs • Transformers • Starters • and More!



WE SPECIALIZE IN THE TOP BRANDS & CARRY THE HARD-TO-FIND ITEMS

Providing Same Day,  
Next Day Air Shipments for Emergency Needs!



WE ALSO BUY  
YOUR USED EQUIPMENT...  
CALL US TODAY!



**TOLL FREE: 855-4UR-BRKR**

Tyler Bagley, Scott Holmes, David Billings • 303-431-0518 • Fax: 303-431-0288

**WWW.DENVERBREAKER.COM**



All Breakers are Insured and Guaranteed — All Material Is Fully Load Tested.

## SPECIALTY ELECTRIC SUPPLY

614 E Mills Rd. Joliet, IL, 60433

### “EXPLOSION - PROOF” HEADQUARTERS

Junction Boxes, Unions,  
Seals, Flex, Starters, Breakers,  
Lighting, Drains, etc...

Huge Inventory of All Electrical  
Construction Material and Controls.

*Including:* Crouse-Hinds,  
Appleton, OZ/Gedney, T&B,  
Burndy, Square-D, Allen  
Bradley & Others

*Buy or Sell*

**800-972-7715**

**815-726-4027 Fax 815-726-3371**

## When You Need It Now



### All Major Manufacturers

Adalet, Allen Bradley, Appleton, ASCO, Bryant, Burndy, Bussman,  
Crouse Hinds, Cutler Hammer, Edison, FPE, GE, Hubbell, ITE,  
Killark, OZ, Square D, Thomas and Betts

Fittings • Circuit Breakers • Switches • Receptacles  
MCC Buckets • Motor Controls • Fuses • Wiring Devices



**ALL CURRENT ELECTRICAL SALES**

Selling Exclusively Through Wholesale Distributors

**(800)223-0483**

**www.allcurrent.com**



**BUY • SELL • REPAIR**

**ALL MAKES - CURRENT & OBSOLETE**

**NEW & RECONDITIONED**

**2 YEAR WARRANTY**

**Efficient, Fast and Reliable Service**

**800-464-0540**

A.C. (Al Campos) • 2712 S. GRAND AVE., SANTA ANA, CA 92705

**714-540-0440 • FAX 714-540-0441**

# POWERSELL LISTINGS

CALL 1-800-328-0328 or Visit [www.electricaladvertiser.com/powersell](http://www.electricaladvertiser.com/powersell) to Sell Your Electrical Surplus

## BUS DUCTS

Amps	Manufacturer	Item Description	Price	NR	ST	Company	Phone
225	Sq D	Cat #AP302-10 340'	NEG	U	MN	EMSCO	763-571-9005
4000	Sq D	AP2340G-10 5000'	NEG	U	MN	EMSCO	763-571-9005

## BUS PLUGS

Amps	Manufacturer	Item Description	Price	NR	ST	Company	Phone
30	GE/ABB	3PH, 3W, 600V, 30A, 200KA@480V, w/ground, accepts Class H, R	NEG	N	TX	M & J Elec	800-931-5097
30	CH	9 - New in box - Eaton Pow-R-Way III, 3-pole, Plug, 30A, 600V, Busway	NEG	N	TX	M & J Elec	800-931-5097
100	SqD	nice used: 7 - PHJ36100GN 10 - PHJ36080GN 100 - PHJ36202GN	Call	U	TX	Lonestar Elec	713-907-1229

## CIRCUIT BREAKERS - AIR INDOOR - 600 VOLT CLASS

Amps	Manufacturer	Item Description	Price	NR	ST	Company	Phone
1600	GE	GE AKR-9D-50H	2000	U	WV	Mt State	304-909-6118
3200	GE	AKR-9D-75	3000	U	WV	Mt State	304-909-6118
4000	GE	AKR-10D-100	7500	R	WV	Mt State	304-909-6118
4000	GE	GE AKR 9D 100	6000	U	WV	Mt State	304-909-6118

## CIRCUIT BREAKERS - AIR INDOOR - 5000 VOLT CLASS

Amps	Manufacturer	Item Description	Price	NR	ST	Company	Phone
1200	WH	150DH-250, Retrofit 50VCP-18WR350, Elec op, D/O, 4160V	NEG	U	MN	EMSCO	763-571-9005
1200	Siemens	5-GMI-250-1200-58, Electrical operated, D/O, 4160V	NEG	S	MN	EMSCO	763-571-9005

## CIRCUIT BREAKERS - AIR INDOOR - 15000 VOLT CLASS

Amps	Manufacturer	Item Description	Price	NR	ST	Company	Phone
1600	West	DS-416	700	U	WV	MT State	304-909-6118
	ABB	15DHK-500, Elec Op, D/O, 250V AC chrg/clse, 250V DC trip	NEG	U	MN	EMSCO	763-571-9005

## CIRCUIT BREAKERS - MOLDED & INSULATED CASE - 480 VOLT CLASS

Amps	Manufacturer	Item Description	Price	NR	ST	Company	Phone
125	SqD	BDA36125 - New in original Box - 21 Pcs in stock	400	N	FL	Alpha Brkrs	945-488-3351
1600	Sq D	NW16H1, 6.0 trip w/LSIG	NEG	U	MN	EMSCO	763-571-9005

## CIRCUIT BREAKERS - MOLDED & INSULATED CASE - 600 VOLT CLASS

Amps	Manufacturer	Item Description	Price	NR	ST	Company	Phone	
200	Eaton	CKDPV4200W PVGuard Solar. Requires poles in series connection UL	NEG	S	OR	Oregon Brkrs	800-943-3323	
250-400	GE	List of Like New G. E Breakers 250-400 Amp	NEG	N	TX	M&J Elec	800-931-5097	
300	Eaton	HKD3300C04S09 Thermal-mag trip, 65k AIC at 480V, MCCB W/lugs	NEG	S	OR	Oregon Brkrs	800-943-3323	
350	Eaton	CKDPV4350W PVGuard Solar. Requires poles in series connection	JL	NEG	S	OR	Oregon Brkrs	800-943-3323
400	SqD	LJA36400U33X - New in original box - 21 pcs in stock	1900	N	FL	Alpha Brkrs	945-488-3351	
400	Eaton	HKD3400C04S09 Thermal-mag trip, 65k AIC at 480V, MCCB w/ lugs	NEG	S	OR	Oregon Brkrs	800-943-3323	
400	Eaton	HKDDC3400F Eaton's DC breaker family is UL 489 listed. Frame Only	NEG	S	OR	Oregon Brkrs	800-943-3323	
1200	SqD	New ILINE 1200 Amp 600V	5000	N	TX	S TX Breakers	956-606-2062	

## CIRCUIT BREAKERS - MOLDED & INSULATED CASE - UNSPECIFIED VOLT CLASS

Amps	Manufacturer	Item Description	Price	NR	ST	Company	Phone
20	Sq D	400 QOB230 400 QOB220 make offers all white numbers	NEG	U	NJ	East Coast Bkr	727-692-6697
30	GE	All Sizes GE 120/240V G Breakers Liquidating All Inventory 20-30% Off	NEG	N	NC	UPA	864-516-4595
100	Eaton	Up to 500 - NIB. BRH2100, make best offer let me know how many	NEG	N	TX	Lonestar Elec	713-907-1229
100	SqD	New Square D QOB2100VH 511 Pcs. Available	45	N	TX	S TX Breakers	956-606-2062
200	GE	GE Feed Through Lugs THLK2200 For GE 120/240V Panels	NEG	N	NC	UPA	864-516-4595
240	ABB	ABB SU201ML-C20 20A Branch Circuit Breaker, Din Mount	NEG	N	CO	RK Mission Crit	720-810-7294
240	Eaton	20A Branch Circuit Breaker 1P, 277V, 10kAIC, C Curve, Din Mount	NEG	N	CO	RK Mission Crit	720-810-7294
240	Schneider	20A Mini Circuit Breaker, 1P, Din Mount, UL 489	NEG	N	CO	RK Mission Crit	720-810-7294
240	Noark	B1H1C20 Mini Branch Breaker, 20A, 227V 10kA, Din Mount, UL 489	NEG	N	CO	RK Mission Crit	720-810-7294
240	Weidmuller	BR1C20UC 20A Branch Circuit Breaker, 1P, 277V, 10kAIC, Din Mount	NEG	N	CO	RK Mission Crit	720-810-7294
1000	CH	GHMVD & JHMVD, I have 720 each	NEG	N	TX	Lonestar Elec	713-907-1229
		50 - nice Used GE SGB38C0400 breakers best offer + shipping	NEG	U	TX	Lonestar Elec	713-907-1229

## CIRCUIT BREAKERS - VACUUM INDOOR - UNSPECIFIED VOLT CLASS

Amps	Manufacturer	Item Description	Price	NR	ST	Company	Phone
1200	WH	150VCP-W750, 15 Kv, Elec op, 120V trip/close, in struct	NEG	U	MN	EMSCO	763-571-9005
1200	GE	VB1-4.16-250-2, Elec op, DO, 4160V, 1992	NEG	U	MN	EMSCO	763-571-9005

## CONDUIT

Item Description	Price	NR	ST	Company	Phone
2" Rigid Conduit - Fittings Available Liquidating All Inventory Most Items 20%-30% OFF	NEG	N	NC	UPA	864-516-4595
3" PVC Conduit & Fittings TAs, Couplings, Weather Heads, Elbows, etc. Most Items 20-30% Off	NEG	N	NC	UPA	864-516-4595
4" PVC Conduit & Fittings Available TAs, Couplings, Elbows, etc. Most Items 20-30% Off	NEG	N	NC	UPA	864-516-4595
6" PVC Conduit 6" PVC 90° Elbows 6" PVC Couplings Liquidating Inv Most Items 20-30% Off	NEG	N	NC	UPA	864-516-4595

## FITTINGS

Item Description	Price	NR	ST	Company	Phone
61 New Crouse/Hinds EYDX61 with Drains. ALL NEW Fittings Bad Boxes	NEG	N	TX	Lonestar Elec	713-907-1229
All Types of 2" PVC Fittings TAs, Couplings, Conduit Bodies, JBAs, Weatherheads, Elbows, etc	NEG	N	NC	UPA	864-516-4595
Connectors For Non Metallic Liquid Tight Conduit. Straight & 90 Degree - Sizes 1/2" 3/4" 1" 2"	NEG	N	NC	UPA	864-516-4595
3 Different Types of Roof Boots/ Flashings Fits Various Size Conduits & Pipes 20-30% Off	NEG	N	NC	UPA	864-516-4595

## FITTINGS

Item Description	Price	NR	ST	Company	Phone
Busman TCF100 Lowpeak Cube Fuse	NEG	N	CO	RK Mission Crit	720-810-7294

## GENERATORS - DIESEL - ENGINE DRIVEN

Kw	Manufacturer	Item Description	Price	NR	ST	Company	Phone
250	Kohler	Cat #250RQZD101, Spec: PA-705205-A, 3 ph, 2300/4160V	NEG	U	MN	EMSCO	763-571-9005
900	CAT	#3508 DITA, Standby, skidmount, 1125 KVA, 480V	NEG	U	MN	EMSCO	763-571-9005

## MOTOR CONTROL

Item Description	Price	NR	ST	Company	Phone
1-Mod 6 18" Feeder with KAP36200 w/door	NEG	U	TX	Lonestar Elec	713-907-1229
1-Mod 6 6" feeder w/GJL36030 w/door	NEG	U	TX	Lonestar Elec	713-907-1229
1-Mod 6 6" Feeder w/GJL36050 w/door	NEG	U	TX	Lonestar Elec	713-907-1229
1-Mod 6 Size 1 12" w/FAP3601513M w/ no starter w/door	NEG	U	TX	Lonestar Elec	713-907-1229
1-Mod 6 Size 1 18" w/FAP3601513M w/ no starter and no door.	NEG	U	TX	Lonestar Elec	713-907-1229
1-Mod 6 Size 2 18" w/FAP3610018M w/doors w/starter	NEG	U	TX	Lonestar Elec	713-907-1229
1-Size 1 18" w/FAP3600712M w/no starter and no door	NEG	U	TX	Lonestar Elec	713-907-1229
1-Size 2 12" w/FAP3610018M w/starter w/doors	NEG	U	TX	Lonestar Elec	713-907-1229
Quantity 11- Size 2 12" w/FAP3605016M with doors w/starter	NEG	U	TX	Lonestar Elec	713-907-1229
12-Size 1 12" w/FAP3600712M w/starter w/doors	NEG	U	TX	Lonestar Elec	713-907-1229
14-Size 1 12" FAP3601513M w/starter w/doors	NEG	U	TX	Lonestar Elec	713-907-1229
2-Size 1 12" w/FHP3603015M w/starter w/door	NEG	U	TX	Lonestar Elec	713-907-1229
3-Mod 6 18" Feeder w/KAP36110 with doors	NEG	U	TX	Lonestar Elec	713-907-1229
3-Mod 6 6" Feeder w/ GJL36100 w/door	NEG	U	TX	Lonestar Elec	713-907-1229
5-Mod 6 Size 3 18" w/FAP3610018M w/starter w/door	NEG	U	TX	Lonestar Elec	713-907-1229
64-Size 1 12" w/FAP3603015M w/starter w/doors	NEG	U	TX	Lonestar Elec	713-907-1229
1-Mod 6 36" 400amp plug feed LAL36400 w/door 1-Mod 6 36" 400amp feed LAL36400 w/o door	NEG	U	TX	Lonestar Elec	713-907-1229
1-Mod 6 Size 1 12" w/FAP3600712M w/no starter w/door	NEG	U	TX	Lonestar Elec	713-907-1229
1-Mod 6 Size 1 12" w/FAP3603015M w/no starter w/door	NEG	U	TX	Lonestar Elec	713-907-1229

## MOTOR CONTROL CENTERS

Kw	Manufacturer	Item Description	Price	NR	ST	Company	Phone
6-1	AB	2100 Series, centerline, size 6-1, C/B & fusible type, 30 sec	NEG	U	MN	EMSCO	763-571-9005
1-5	West	5 Star, size 1 to 5, breaker type, 80 sections	NEG	U	MN	EMSCO	763-571-9005

## PANELS

Item Description	Price	NR	ST	Company	Phone
QTY 36 - SQ D BREAKER PANELS Q0342MQ225RB / SQ D Main Panel	NEG	N	TX	M & J Elec	800-931-5097
GE 1600 amp MCB, 3PH 3Wire, 3 sect panels N-1 w/SSF16G21, 2- SKLL36AT1200, & More	NEG	N	TX	Lonestar Elec	713-907-1229
Eaton Panel Box & Panel Board 480V 400A 3 Phase Outdoor NEMA3R New in Box	NEG	N	NC	UPA	864-516-4595
Square D MH80WP Panel Box w/NF Panel Board. 480V 3 Phase 400A Main Breaker/350A & 30A	NEG	N	NC	UPA	864-516-4595

## PANELBOARDS

Amps	Manufacturer	Item Description	Price	NR	ST	Company	Phone
400	GE	QMR 400 Amp 600 V	800	U	WV	MT State	304-909-6118
800	CH	FDPW367, FDP panel mount, type FDPW, 3PH, 3P, 600V, nema 1	NEG	N	TX	M & J Elec	800-931-5097
800	CH	FDP panel mount, type FDPW, 3PH, 3P, 600V, nema 1, fusible	NEG	N	TX	M & J Elec	800-931-5097
800	GE	QMR 800amp 600 v with mounting hardware and fuses	3500	U	WV	MT State	304-909-6118
		QTY 6 - NIB G.E ADS36030HD Pane Board Switch Call for Quote	NEG	N	TX	M & J Elec	800-931-5097
		Siemens Panelboards For Sale used all with Hardware	NEG	U	TX	Lonestar Elec	713-907-1229
	West	Used FDP365R with mounting hardware and fuses	800	U	WV	MT State	304-909-6118
	West	FDPS 367	3000	U	WV	MT State	304-909-6118

## SWITCHES

Item Description	Price	NR	ST	Company	Phone
New In Box Siemens 1-HF35NRA, 7-HNF365RA	NEG	N	TX	Lonestar Elec	713-907-1229
Cutler Hammer DH325NGK	750	U	WV	MT State	304-909-6118
Square D H-364-N	250	U	WV	MT State	304-909-6118
Square D H364N	1200	U	WV	MT State	304-909-6118
ASCO J07ATSB30150N5XC 150amp 480v 700 series	1200	U	WV	MT State	304-909-6118
General Electric TH3365	1000	U	WV	MT State	304-909-6118
General Electric TH4325	700	U	WV	MT State	304-909-6118

## SWITCHGEAR

Amps	Manufacturer	Item Description	Price	NR	ST	Company	Phone
15 kv	GE	Pwr Vac, Main-Tie-Main Outdoor Line-up, (11)VB1-13.8-500	NEG	U	MN	EMSCO	763-571-9005
5000	Sq D	NW50H main, 6.0 trip unit (LSIG), 3 sections I-Line brkr distr	NEG	U	MN	EMSCO	763-571-9005

## STARTERS

Item Description	Price	NR	ST	Company	Phone
300 HP/69 FLA GE Limit Amp, vacuum, 2300V, 120V control, fused	NEG	U	MN	EMSCO	763-571-9005

## TRANSFORMERS

KVA	Manufacturer	Item Description	Price	NR	ST	Company	Phone
45	Hammond	P045KBKF - 45kVA 480V-120/208V HPS TITAN TRANSF	2900	N	OR	Oregon Brkrs	503-736-0921
750(1000)	ABB	12470 Delta Prim, 480Y/277 Sec, dry, taps, Nema 1	NEG	R	MN	EMSCO	763-571-9005

## TRIP UNITS

# LOOKING FOR SOMETHING UNDERGROUND?

## We found it!

We've found underground PVC plastic pipe, electrical cable, conduits, steel pipe, ceramic pipe, and asbestos pipe. We've found it all with the MAGNETOMATIC®. This pipe locator has one moving assembly - contains no dials, intricate mechanisms or batteries. In essence, the MAGNETOMATIC® is a "space age" divining rod. It simply reacts to pipe and cables underground when it passes over them. MAGNETOMATIC® is effective to a depth of 10 feet or more. It collapses into a neat package that fits into your hip pocket. Sold on a money-back, satisfaction guaranteed basis. Used by contractors, public utilities, plumbers, and others. Simple, easy-to-read instructions. Reasonably priced.



**MAGNETOMATIC**  
PIPE LOCATOR

## Only \$44.50

Plus \$3.00 Shipping & Handling



**MAIL CHECK TO:**

THE ELECTRICAL ADVERTISER  
1010 Dale Street North  
St Paul, MN 55117

**INCLUDE:**

YOUR COMPANY NAME  
AND ADDRESS

Or Call... 1-800-328-0328  
[www.ToolsPlusMore.com](http://www.ToolsPlusMore.com)



**BRUCE  
ELECTRIC  
EQUIPMENT**  
*The industry buzz is about dependability*

**TRANSFORMERS, CIRCUIT BREAKERS  
POWER CONDITIONING EQUIPMENT &  
ELECTRICAL DISTRIBUTION EQUIPMENT**  
www.brucelectric.com | 631-615-8927



## ALL THE EQUIPMENT YOU NEED...**WHEN YOU NEED IT!**

- Transformers
- Transient Voltage Surge Suppressors
- Power supplies
- Panelboards
- Circuit Breakers
- Voltage Surge Suppressors
- Power Line Conditioners
- Safety Switches
- Phase Converters
- Rectifiers
- UPS Systems
- Transfer Switches

And you can save even more when you buy from our line of fully refurbished transformers, molded case circuit breakers and other electrical distribution equipment. Buy with confidence as all items carry our exclusive **TWO YEAR WARRANTY** (one year on circuit breakers).

Don't know what to do with your used circuit breakers and obsolete inventory? Ask about our **CIRCUIT BREAKER PURCHASE PROGRAM!** We'll turn your used or unwanted items into cash or credit toward the purchase of any equipment we sell. **For more information, visit our website, or give us a call today.**



**ABB**




**SOLA/HEVI-DUTY**



Hammond Power Solutions Inc.



REX POWER MAGNETICS

ACME  **ELECTRIC**





SUNBELT  
SOLOMON

We have the largest inventory of  
transformers and electrical power  
distribution equipment in  
North America.



[sunbeltsolomon.com](http://sunbeltsolomon.com) | 800.830.0251

### Limited Domestic Manufacturing

The United States does not manufacture enough transformers to satisfy domestic needs. Industry analysts estimate that imports now supply a large portion of the U.S. transformer market.

Large transformers are highly specialized products that require significant engineering, skilled labor, and long production cycles. Building new factories also takes years. Even when companies invest in new facilities, the supply gap can persist because demand continues to grow faster than manufacturing capacity.

### Supply Chain Constraints

Transformer production depends on specialized raw materials such as grain-oriented electrical steel, copper, insulation materials, and transformer oil. Global shortages and trade disruptions have increased costs and delayed manufacturing. Tariffs on imported metals have further complicated the situation.

Some high-voltage transformers now have lead times exceeding three or four years.

### Economic and Technological Consequences

The transformer shortage is already affecting major sectors of the U.S. economy.

### Delays to Renewable Energy Projects

Solar farms, wind projects, and battery storage systems cannot connect to the grid without transformers. Developers increasingly report long waiting periods before projects can become operational.

These delays threaten national clean energy goals and increase project costs.

### Slower EV Charging Expansion

Electric vehicle charging stations require distribution transformers and grid upgrades. Utilities in some regions now report interconnection delays ranging from several months to multiple years.

This slows the rollout of fast-charging infrastructure needed to support mass EV adoption.

### AI and Data Center Bottlenecks

Artificial intelligence has become a major driver of electricity demand. Massive data centers require enormous amounts of power and specialized electrical equipment. However, transformer shortages are delaying many planned facilities.

Industry observers increasingly describe transformers as the hidden infrastructure bottleneck limiting AI expansion in the United States.

### Higher Costs for Utilities and Consumers

Transformer prices have risen sharply over the past several years. Utilities facing long waits and expensive procurement costs may ultimately pass these expenses on to consumers through higher electricity rates. **Check out our Transformer Advertisers in this magazine.**

## James Elliott - Electrical Advertiser

[www.electricaladvertiser.com](http://www.electricaladvertiser.com)

[www.toolsplusmore.com](http://www.toolsplusmore.com)

& [www.wincogenerator.com](http://www.wincogenerator.com)

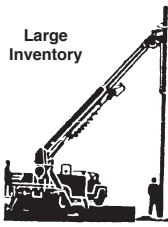

- Hi-Ranger • Telelect • Altec
- Time • Versalift
- Lift-All • Pole & Reel Trailers
- Pullers • Tensioners
- Augers • Winches
- New & Used Parts

**JOHN A. MYERS ENTERPRISES**  
A DIVISION OF EAST COAST RENTALS, INC.  
UTILITY TRUCK EQUIPMENT • SALES AND RENTALS

50+ YEARS EXPERIENCE  
BUCKET TRUCKS  
DIGGER-DERRICK TRUCKS  
- CALL TODAY -

**(336) 229-5588 OR FAX (336) 229-7082**  
[www.jmyersenterprises.com](http://www.jmyersenterprises.com)  
FINANCE & LEASE PURCHASE ASSISTANCE AVAILABLE

**JEFF MYERS**  
P.O. Box 3125  
Burlington, N.C. 27215

*For best prices & best service*



Complete line of residential and commercial Electric Watthour Meters.

Servicing the sub metering industry in the US, Canada, Bahamas, Caribbean, Central and South America.

**HIALEAH METER**  
Meters you can count on since 1954

800.654.0821  
[www.HialeahMeter.com](http://www.HialeahMeter.com)

**WATTHOUR METERS & ACCESSORIES**

- Solid State • Electromechanical
- Inst Transformers 600V to 69KV
- Sockets • Test Switches • Pulse Totalizers
- Power Transducers • Telemetry Systems

SALES & SERVICE - LARGE INVENTORY  
**METERING SALES & SVC., INC.**  
*"The right meter the first time - GUARANTEED"*  
**1-888-GEMETER (215) 675-5117**  
*Master GE Distributor*

**ELECTRIC EQUIP CORP OF VIRGINIA**

**QMQB Federal Pacific Panelboard Switches**

**All Sizes 30amp to 1200amp • BDP/CDP hardware**

**(202) 269-1910**  
**Fax (202) 269-1896**  
e-mail: [ggem@erols.com](mailto:ggem@erols.com)

**2,000 Items For Sale on PowerSell**

[www.electricaladvertiser.com](http://www.electricaladvertiser.com)

# TRANSFORMERS DISTRIBUTION AND SUBSTATION



BOX 180  
COLMAN, SOUTH DAKOTA 57017

"THE TRANSFORMER PEOPLE"



Modern Rewind Facilities  
More than 61 Acres Inventory  
Prompt Delivery—Coast to Coast

CALL TOLL-FREE  
800-843-7994  
FAX 605-534-3861  
E-Mail: t-r@t-r.com  
Internet: www.t-r.com



Complete Outdoor  
Substations,  
Circuit Breakers,  
Regulators,  
and Switchgear

## DRY TRANSFORMERS, THREE PHASE

KVA	QTY	PRIMARY	SECONDARY	MAKE	TAPS	COMPANY	PHONE
300	2	4160D	208Y/120	HAMMOND	Y	Sunbelt	800-433-3128
500	1	2400D	480Y/277	HAMMOND	Y	Sunbelt	800-433-3128
500	1	4160D	208Y/120	HAMMOND	Y	Sunbelt	800-433-3128
500	1	4160D	480Y/277	HAMMOND	Y	Sunbelt	800-433-3128
500	1	12470D	208Y/120	OLSUN	Y	Sunbelt	800-433-3128
500	1	12470D	480Y/277	OLSUN	Y	Sunbelt	800-433-3128
750	2	4160D	480Y/277	HAMMOND	Y	Sunbelt	800-433-3128
1000	4	4160D	480Y/277	GE	Y	Sunbelt	800-433-3128
1500	4	4160D	480Y/277	GE	Y	Sunbelt	800-433-3128
1500	2	13800D	480Y/277	WEST	Y	Sunbelt	800-433-3128
2500	3	4160D	480Y/277	OLSUN	Y	Sunbelt	800-433-3128
2500	1	13800D	480Y/277	OLSUN	Y	Sunbelt	800-433-3128

## PADMOUNT TRANSFORMERS, THREE PHASE

KVA	QTY	PRIMARY	SECONDARY	MAKE	TAPS	COMPANY	PHONE
300	1	2400	208Y/120	WEST	Y	Belyea	610-515-8775
300	1	13200	480Y/277	BALTEAU	Y	Belyea	610-515-8775
500	2	2400D	208Y/120	COOPER	Y	Sunbelt	800-433-3128
750	1	4160	480/277	HC	Y	Belyea	610-515-8775
1000	1	13.2Y/7620	208Y/120	MCE	Y	Belyea	610-515-8775
1500	2	13200D	480Y/277	SUNBELT	Y	Sunbelt	800-433-3128
1500	2	34500D	480Y/277	SUNBELT	Y	Sunbelt	800-433-3128
1500	1	13.2 Y/7620	480Y/265	STANDARD	N	Belyea	610-515-8775
2000	2	13200D	480Y/277	SUNBELT	Y	Sunbelt	800-433-3128
2500	4	4160Y/2400	480Y/277	SUNBELT	Y	Sunbelt	800-433-3128
2500	2	4160D	480Y/277	SUNBELT	Y	Sunbelt	800-433-3128
2500	5	4160D	480D	COOPER	Y	Sunbelt	800-433-3128
2500	5	12.4Y/7200	480D	SUNBELT	Y	Sunbelt	800-433-3128
2500	3	13200D	480Y/277	SUNBELT	Y	Sunbelt	800-433-3128
2500	3	34500D	480Y/277	SUNBELT	Y	Sunbelt	800-433-3128
3000	2	4160D	480Y/277	SOD	Y	Sunbelt	800-433-3128
3750	2	13200D	480Y/277	SUNBELT	Y	Sunbelt	800-433-3128
5000	1	24.9Y/14.4	13.8Y/7970	COOPER	Y	Sunbelt	800-433-3128

## SUBSTATION TRANSFORMERS, THREE PHASE

KVA	QTY	PRIMARY	SECONDARY	MAKE	TAPS	COMPANY	PHONE
1500	4	12470D	480Y/277	RTE	Y	Sunbelt	800-433-3128
1500	5	13200D	480Y/277	GE	Y	Sunbelt	800-433-3128
2000	3	4160D	480Y/277	WEST	Y	Sunbelt	800-433-3128
2500	2	13800Y/7970	480D	WEG	Y	Sunbelt	800-433-3128
2500	1	43800D	4160Y/2400	Cooper	Y	Sunbelt	800-433-3128
3750	5	4160D	480Y/277	SIEMENS	Y	Sunbelt	800-433-3128
3750	3	34500D	4160Y/2400	WEST	Y	Sunbelt	800-433-3128
5000	1	67000D	4360Y/2520	PENN	Y	T & R Elec	800-843-7994
5000	2	34.5x68.8	4160Y/2400	ASEA	Y	Sunbelt	800-433-3128
5000	2	12470D	4160Y/2400	GE	Y	Sunbelt	800-433-3128
7500	1	67000	12470Y/7200	MOLONEY	Y	T & R Elec	800-843-7994
7500	1	13860 Y/8000	2400D	PENN	Y	T & R Elec	800-843-7994
7500	3	13800D	4160Y/2400	COOPER	Y	Sunbelt	800-433-3128
7500	4	26400D	4160Y/2400	SOD	Y	Sunbelt	800-433-3128
10000	1	115000D	4160Y/2400	HK PORTER	Y	Sunbelt	800-433-3128
10000	1	68000D	6800Y/3958	ASEA	Y	Sunbelt	800-433-3128
7500	1	13860 Y/8000	2400D	PENN	Y	T & R Elec	800-843-7994
7500	3	13800D	4160Y/2400	COOPER	Y	Sunbelt	800-433-3128
7500	4	26400D	4160Y/2400	SOD	Y	Sunbelt	800-433-3128
10000	1	115000D	4160Y/2400	HK PORTER	Y	Sunbelt	800-433-3128
10000	1	68000D	6800Y/3958	ASEA	Y	Sunbelt	800-433-3128

# HAVE EXCESS TRANSFORMERS? CALL TODAY TO LIST THEM HERE! 800-328-0328

# FOR SALE



2025 Freightliner M2-106 Plus T/A Flatbed Utility Truck, Cummins 360hp L9 Diesel, Allison Auto, Terex Commander 6060 Digger Derrick, 36000lbs Max Lift, 60' Sheave Height, Riding Console, 3rd FBG/Hyd, 2-speed Digger w/ Auger, 4 Outriggers, Hose Reel, Pintle Hitch .....**\$230,500**



2020 Freightliner M2-106 4x4 Utility Truck, 6.7L Cummins, Auto, Altec AA55, 60' Material Handling Two-Man Bucket, 4 Outriggers **.CALL**



Custom Built LTX180 Rubber Tracked Carrier, 260hp Mechanical 8.3L Cummins, Danfoss Hydrostatics, Terex Commander 5050, 30000lbs Max Lift, Riding Console, 54' Sheave Height, Manual Pull-Out 4th stage, Remote Control, Pedestal Winch, 4 Outriggers, Front and Rear Winch .....**\$299,999**



2025 Freightliner M2-106 Plus Utility Truck, 360hp 8.9L Cummins Diesel, 6-speed Allison Automatic, 2015 Altec AM55, 60' Material Handling Two-Man Bucket, 4 Outriggers .....**\$190,000**



2026 Freightliner M2 Plus 4x4, 360hp Cummins L9, 6-spd Allison Automatic, A/B, A/C, 2012 Terex Commander 5048 Digger Derrick, 25910lbs Max Lift, 48' Sheave Height, Riding Console, Mark IV 2-speed digger head with 18" auger, Pole Claws, 4 Outriggers, Cab guard, Braden PD35A Front Winch, Pole rack, DC to AC inverter, Milwaukee rapid dual charger. ....**\$229,350**



2018 Freightliner M2-106 Utility Truck, 6.7L Cummins Diesel, Allison Automatic, Altec DC47-TR Digger Derrick, 23670lb Max Lift, 47' Sheave Height, Riding Console, Pole Claws, 2-Speed Digger w/ 18" Auger, Pole Rack, 4 Outriggers .....**\$77,500**



2015 Freightliner M2-106 Flatbed Utility Truck, 6.7L Cummins, Auto, A/C, A/B, Terex Commander 4047 Digger Derrick, 23660lbs Max Lift, 47' Sheave Height, Riding Console, Pole Claws, 2-speed Digger w/ 18" Auger, Pole Rack, 4 Outriggers .....**\$87,500**



2021 SDP Backyard Rubber Crawler, Yanmar Diesel, Hydrostatic, Terex TL55-P Bucket, 60' Telescopic Single-Man Bucket, 4 Outriggers, Support tilt top trailer .....**\$85,000**



2026 Kenworth T380, 360hp Cummins L9, 6-spd Allison Automatic, A/B, A/C, 2019 Terex TC55 Bucket, 60' Material Handling Two-Man Bucket, 4 Outriggers . **\$200,000**



2025 Freightliner M2 Plus Utility Truck, 330 hp ISL9 Cummins, Allison 6-spd Automatic, 2019 Altec AM55, 60' Material Handling Two-Man Bucket, 4 Outriggers .....**\$199,999**



2026 International MV607 Utility Truck, 360 hp ISL9 Cummins, Allison 6-spd Automatic, 2016 Altec AA55, 60' Material Handling Two-Man Bucket, 4 Outriggers .....**\$199,999**



2026 Kenworth T380 Flatbed Utility Truck, 360hp Paccar PX9 L9 Cummins Diesel, Allison Auto, 2016 Terex Commander 4047, 23660lbs Max Lift, Riding Console, Pole Claws, 2-speed Digger w/ 18" auger, 4 Outriggers .....**\$198,250**



2025 International MV Utility Truck, 330hp L9 Cummins, Allison Auto, 2021 Terex TCX55, 60' Material Handling Two-Man Bucket, Platform Elevator, Hyd. Jib & Winch, 4 Outriggers.....**\$199,999**



2015 Ford F750 Flatbed Utility Truck, 6.7L Cummins, 6-speed Manual, Hyd Brakes, 25999GVWR, Terex XT60 Rear Mount, 65' Working Height Over-Center Single-Man Bucket, 4 Outriggers, Cab Guard.....**\$80,000**



2019 Freightliner M2 4x4 Utility Truck, 6.7L Cummins, Auto, Terex TC55, 60' Material Handling Two-Man Bucket.....**\$99,000**



2027 Kenworth T280 Utility Truck, 325hp Paccar PX7 6.7L Cummins Diesel, Allison Auto, 26000lbs GVWR, A/B, A/C, 2015 Altec L42M, 47' Over-Center Single-Man Bucket, Hyd. Jib & Winch, 4 Outriggers. ....**\$185,000**

## Bill Jones Equipment

314 FM 3152, Livingston, TX 77351

Contact: Corry Jones • Phone: 936-646-5343 • Toll Free: 800-205-6593

Website: [www.billjoneseqpt.com](http://www.billjoneseqpt.com) • Email: [corry@billjoneseqpt.com](mailto:corry@billjoneseqpt.com)

# The Bulldog Bender

is designed and manufactured by  
an electrician for electricians.

**MADE IN THE USA**



**Tradeshow Special**



**\*48 contiguous states**

**Pup  
4/0 and Smaller  
\$166**



**Pup Pro  
4/0 and Smaller  
\$259**



**Pup 3 Piece Set  
4/0 and Smaller  
\$333**



**Original  
500 MCM and Smaller  
\$189**



**Pro w/ Adapter  
500 MCM and Smaller  
\$289**



**3 Piece Set  
500 MCM and Smaller  
\$395**



**Big Daddy Set  
600-750 MCM  
\$488**



**T-1000 Set  
1000 KCMIL  
\$699**



**WWW.TOOLSPLUSMORE.COM**

# ELECTRIC AVENUE

## CIRCUIT BREAKERS

**RG Industries**  
AN ELECTRICAL PRODUCTS COMPANY

**WE STOCK ALL BREAKERS  
ALL MAJOR BRANDS**

- Molded Case • Insulated Case
- Air Breakers • Hardware Kits

**(800) 942-7561**  
Sales@rgindustries.net **PEARL**

## CIRCUIT BREAKERS

**AMERICAN BREAKERS**

★ ★ ★ ★ ★ ★ ★ ★ ★ ★

**Let Us Be Your #1 Source For  
Circuit Breakers, Switches &  
Hardware Etc.**

**All Makes - Current & Obsolete  
New & Reconditioned 2 Year Warranty  
Lowest Prices Guaranteed!**

**888-317-6500**  
Email: amerbkrs1@cs.com  
www.americanbreakersca.net

**Se Habla Español  
QUALITY & VALUE  
OUR 15TH ANNIVERSARY!**

## CIRCUIT BREAKERS

**MCC  
Electrical  
Supply Corp.**

**BUY • SELL • REPAIR  
BREAKERS & ELECTRICAL  
EQUIPMENT**

**NEW - USED - OBSOLETE  
RECONDITIONED**

**COAST TO COAST SHIPPING  
24 Hr. EMERGENCY SERVICE  
PH: 805-642-1507  
FAX: 805-642-1596  
mcelectricalsupply@yahoo.com**

## CIRCUIT BREAKERS

**Specializing In  
New, Used,  
& Obsolete  
Molded  
Case Circuit  
Breakers**

**Utah  
Breakers  
& Supply**

**800-805-6557**  
www.utahbreakers.com  
brent@utahbreakers.com

## CIRCUIT BREAKERS

**CALIFORNIA  
CIRCUIT BREAKERS  
& CONTROL CORP.**

**Ph 323-564-4777  
Fx 323-564-5777  
calibreakers@gmail.com**

**Buy, Sell & Repair  
Circuit Breakers  
Motor Control & More  
All Major Brands  
New & Used Electrical**

**Always  
Buying  
SSSS**

**Large Air/Vacuum  
Circuit Breakers  
Switchgear**

**NPE**  
National Power Equipment, Inc.

**CALL  
KEN PRINCE  
800-647-0815  
(CLEVELAND, OHIO)  
www.NPEinc.com  
Email: info@npeinc.com**

**— BREAKERS —  
Medium & High Voltage  
Vacuum, Oil, SF6, Air,  
Reclosers**

*Buying or Selling?*  
**Always Free Listings!**  
**Ask for Larry  
Toll Free 888-705-2003  
Fax 320-289-2841  
eMLS, Inc.  
Your "Vehicle to Value"  
In Electric Equipment**  
PO Box 122, Appleton MN 56208.

**2,000 Items  
For Sale on  
PowerSell**

**www.electrical  
advertiser.com**

**SOUTHBAY  
ELECTRICAL  
SUPPLY  
CORP**

**WE BUY-SELL  
ALL MANUFACTURERS  
Circuit Breakers  
Vacuum & Air Breakers  
MCC & MCB**

**Ph: 626-401-0111  
Fax: 626-401-0113  
For more info contact  
tmsouthbay@att.net**

## ALL TYPES OF CIRCUIT BREAKERS

**New - Obsolete  
Electrical Specialty  
Products**

*Transformers  
Motor Control  
Starters • MCC's etc..  
All Mfrs and Types*

**"We ship nationwide"  
Insured and  
Guaranteed**

**SFO REPRESENTATIVES INC.**

**650-802-6700  
sales@sforeps.com**

**Your Copy  
of The  
Electrical  
Advertiser  
is  
Recyclable.**

**Central  
Breaker &  
Control, LLC**

**WE SELL**

- ◆ Circuit Breakers
- ◆ Safety Switches
- ◆ Motor Control
- ◆ Bus Plugs

**ALL MAJOR BRANDS**

- ◆ New ◆ Used
- ◆ Obsolete

**Ph. 508-731-6181  
Fx. 866-703-6717**

**VES  
VOLUNTEER EQUIPMENT & SUPPLY**

- **BUS DUCT**  
ALL MAJOR BRANDS IN STOCK: SQD, GE, WH, FPE, CH, ITE/Siemens, Gould & More!
- **BUS PLUGS**  
ALL MAJOR BRANDS IN STOCK: SQD, GE, WH, FPE, CH, ITE/Siemens, Bulldog & More!
- **SQUARE D I-LINE PANELS & BREAKERS**
- **CIRCUIT BREAKERS**  
ALL MAJOR BRANDS
- **TRANSFORMERS**  
Dry & Oil - Substations & Pad Mounts 1KVA - 3000KVA
- **MCC's & BUCKETS**  
Size 00 thru 6 - AB, SQD & More!
- **STARTERS & DISCONNECTS**  
ALL MAJOR BRANDS

**WE ALSO BUY THESE ITEMS**

**ph. 866-573-7768  
865-573-7768  
fx. 865-577-3105  
www.volequip.com  
email: sales@volequip.com**

**THE NEXT  
QUICK  
REFERENCE  
DIRECTORY IS  
July  
2026!  
CALL TO  
ADVERTISE**

**YOUR ELECTRICAL  
INDUSTRY ROLODEX**

## CIRCUIT BREAKERS

### Technitrol, Inc.

- Circuit Breaker Repair
  - Molded Case
  - Transformers
- Bus Duct Switches
  - Motor Control
- Air CB's • Switchgear

Germantown, WI

800-263-1170

sales@technitrolinc.com

www.technitrolinc.com

## GENERATORS

**DONT BE LEFT  
IN THE DARK  
BUY A  
GENERATOR**

## METERS

### HIALEAH METER

WATT HOUR METERS  
New & Remanufactured  
GUARANTEED

800.654.0821

HialeahMeter.com

## MOTOR CONTROL



We're your **motor control experts**

### Square D

- Models: 3, 4, 5 & 6

### C-H & Westinghouse

- 5 Star & Type W

### General Electric

- 7700 & 7098 Series, 9000 & 8000 Line

### ITE & Siemens

- Model: 95, 89, Series 5640-5642 & MARQ 21

### Allen Bradley

- 2100 Series Centerline

**(800) 942-7561**

24/7/365 Emergency Services

Sales@rgindustries.net

We Sell New & **PEARL** Reconditioned/Tested

## TRANSFORMERS

### - TRANSFORMERS -

Oil, Silicone, Dry

- New or Used -

Utility Surplus to 500kV

Any Bus Voltage

All kVA Sizes

Buying or Selling?

Always Free Listings!

Ask for Larry

Toll Free 888-705-2003

Fax 320-289-2841

**eMLS, Inc.**

Your "Vehicle to Value"

In **Electric Equipment**

PO Box 122, Appleton MN 56208.

### ALL THINGS TRANSFORMER

\*New and spec built from SGB -Smit

\*Utility Surplus - Nationwide

\*Maintenance and Repair, Rewind

\*Build-out and Decommissioning

\*Oil, Dry, Ester, Cast Coil

**eMLS, Inc.**

**320-289-2840**

**Cell 320-297-1014**

**larryemls@hotmail.com**

**Utility & Industrial**

**Buy & Sell**

## MOTOR CONTROL

# WINGCO<sup>®</sup>

## GENERATORS

### Tri-Fuel Portable Generator

- Low Oil Shutdown
- Electric/Recoil Start

### HPS12000HE

10,800 Continuous Watts

• 15 Gallon Fuel Tank

• Honda GX620 Engine

• Four 20 Amp Receptacles

• One 30 Amp Twist Lock

• One 60 Amp Receptacle

Your Price \$4495.00

\*Price Includes Freight



800-328-0328

act of advertising  
nouncement in  
signed to attract  
ad·ver·tis·ing  
public attention  
ments in the p  
design

www.ElectricalAdvertiser.com

Ph 800-328-0328

## CIRCUIT BREAKER MOUNTING HARDWARE

### STOCKING DISTRIBUTOR FOR ALL TYPES OF CB MOUNTING HARDWARE

C-H, Westinghouse, Siemens, ITE,  
Federal, General Electric

**Southern Electrical Resources**

**877-512-6600**

sales@southernelectricalresources.com

**CHECK OUT**  
**wincogenerator.com**



### MOTOR CONTROL

From 1960-Present

All Brands

Obsolete • New/Used  
(We Buy & Sell)

Email

mleleceq@aol.com

Web

mlelectralequipment.com

Ph 818-781-3935

Fax 818-781-4105



**WE BUY  
MOTOR  
CONTROLS**  
ALL TYPES &  
MANUFACTURERS

**972-253-7783**

dmuir@advancedmotorcontrols.com

## AUCTIONEERS!

Keep The Electrical  
Advertiser In Mind For Your  
Auction Plans.

We also offer Email Blasts  
and Banner Advertising.

Visit

**www.electricaladvertiser.com**  
to see an example of current  
Auction Banners.

Please Call James at  
**800-328-0328**  
for advertising rates and deadlines



# BASELINE™

Manufactured and distributed exclusively by



Call or Visit Us On-Line

## 800-548-7904

[www.BDELECTRICAL.COM](http://www.BDELECTRICAL.COM)

### QUALITY PRODUCTS EXCEEDING EXPECTATIONS WITH SHORT LEAD-TIMES CUSTOMIZED TO MEET YOUR NEEDS!



#### BaseLine Switchgear COMPATIBLE WITH SQUARE D™ I-LINE STYLE SWITCHGEAR

We build all crossbussing with copper so our products withstand the test of time

- Available up to 3000 amps and 600 volts
- UL 891 listed
- NEMA 1 rated
- Suitable for use as Service Equipment
- Can be configured as main lug or with a main switch or breaker
  - 1600 - 3000A Bolted Pressure Switch with ground fault, arc flash reduction, and ERMS
  - 1600 and 2000A Square D, R frame main breakers with LSIG, arc flash reduction, and ERMS
- Branch devices are Square D, I-Line breakers available up to 65kAIC
- Designed to be compatible with Square D™ I-Line Switchgear, but can be configured to connect to any existing switchgear brand
- Power metering and CT metering cabinets available
- Two-Year warranty included

Custom pull sections and enclosure sizes available at additional cost  
**ALL PRODUCTS COME WITH A 2-YEAR WARRANTY**



UL LISTED busway & switchgear Manufactured & Assembled In The **USA**

Call Today: 610.515.8775

# Looking for Obscure, Obsolete, New or Used Parts?

## *Belyea's Vast Inventory Has it All!*



No one has a wider range of  
**Electrical Power Equipment  
and Parts.** Our vast inventory has  
new, used and obsolete parts.

Visit [www.belyeapower.com](http://www.belyeapower.com)  
to find the parts you need.

- ⊕ Electro Mechanical Relay
- ⊕ Substation Equipment
- ⊕ Grounding Resistors
- ⊕ Motor Controls
- ⊕ CT's and PT's
- ⊕ Bushings
- ⊕ Arresters
- ⊕ Gauges
- ⊕ Fuses
- ⊕ And More...



CONTACT US TODAY: 610.515.8775 • Fax (610) 258-1230

2200 NORTHWOOD AVE, EASTON, PA 18045 USA

For our complete inventory visit our website: [www.belyeapower.com](http://www.belyeapower.com) • [sales@belyeapower.com](mailto:sales@belyeapower.com)

# SUMMER SPECIAL

# \$289

## The Original Bulldog Bender™

Electrician designed & developed.  
Proudly Made in USA.

Bending large gauge electrical cables is difficult, especially in tight spaces. Bulldog Bender gives you the power and leverage to easily install, bend, & terminate cables in service panels, LB conduit bodies, switchgear, motor controls, wireways, and meter bases.



**ORDER TODAY**  
**SCAN HERE**



Quick connect Pro Handle and Adapter Bar



90° offset dowel orientation allows ease of use in a variety of applications



Adapter Bar allows left or right cable bends inside tight electrical enclosures

[www.ToolsPlusMore.com](http://www.ToolsPlusMore.com)  
**1-800-328-0328**



Knurled dowels provide secure grip, while Smooth dowels reduce risk of marring cable insulation\*



## MODERNIZE CIRCUIT BREAKERS TO AVOID DOWNTIME

Advanced Electrical & Motor Controls (AEAMC) specializes in life-extension programs to keep aging electrical equipment in service. Retrofit solutions replace bolted pressure switches with modern, current-series circuit breakers.

From outage coordination to installation and testing, our experienced team manages every step of the process.

- Enhance system reliability
- Reduce incident energy levels
- Improve electrical safety
- Integrate communications and remote operation
- Get turnkey retrofit solutions

**Contact us today to discuss your retrofit needs.**



Original



Retrofit



A Group CBS Company

1801 Hurd Dr., Irving, TX 75038  
800-289-2757 | [aeamc.com](http://aeamc.com)

**LEARN MORE**



# The Electrical Advertiser

1010 Dale Street North  
St. Paul, MN 55117

800-328-0328

JUNE 2026

PRSR STD  
U.S. POSTAGE  
**PAID**  
ELECT ADV

Find.  
Fix.  
Fast.



- Busway & Plugs
- Circuit Breakers
- Fuses
- Motor Control Centers
- Panelboards
- Safety Switches
- Switchgear
- Transformers

If we don't have what  
you're looking for,  
**we find it.**

**GET 10% OFF**  
YOUR FIRST ONLINE ORDER

With code **ELECAD10**

**Home to thousands of Transformers,  
Switches, Bus Plugs and Duct, Circuit  
Breakers and Motor Controls.**



250,000<sup>sf</sup> of  
inventory



Every product  
certified



Quick Ship  
Fast lead-time

EMSCO stocks obsolete, reclaimed, and  
hard to find electrical components.

[www.EMSCOMN.com](http://www.EMSCOMN.com)



**24-HOUR  
HOTLINE**

Get what you need, when  
you need it.

**CONTACT US**  
**800.328.1842**